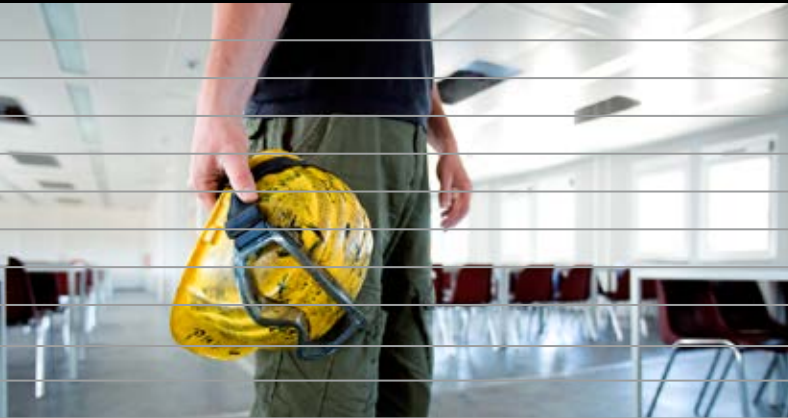


**FLEXIBLE  
HOUSING  
SOLUTIONS.  
WORLDWIDE.**



## **CONSTRUCTION, INDUSTRY AND STORAGE**

OFFICES AND PUBLIC SECTOR

DAY-CARE CENTERS AND SCHOOLS

CONSTRUCTION AND INDUSTRY

HEALTHCARE CENTERS, REST-HOMES AND NURSING HOMES

EVENTS, FAIRS AND EXHIBITIONS

ON-AND OFFSHORE

SERVICE

**algeco**<sup>®</sup>

An ALGECO SCOTSMAN Company

# OVER 50 YEARS' EXPERIENCE IN INDUSTRY, PETROCHEMICALS AND CONSTRUCTION

**In need of an office, meeting room, locker rooms, washrooms or storage containers at your project location or building-site? Just a few modules or extra space at a drilling platform? Algeco can provide extra space, very fast. Worldwide.**



**BECAUSE YOU  
WANT THE BEST  
WORKING CONDITIONS  
FOR YOUR STAFF**

**Algeco is familiar with safety regulations in industry, petrochemicals and construction. We know the importance of security and precision.**

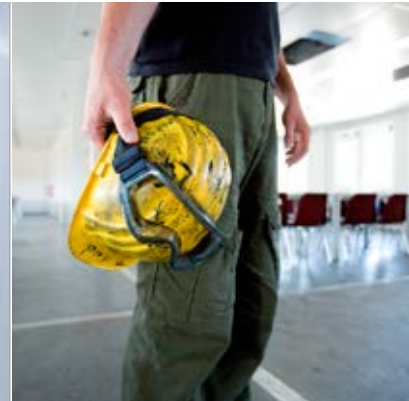
**Algeco experiments with modular units until we achieve the desired result within your budget.**

# ALGECO STORAGE

CONTAINER STORAGE  
AND TRANSPORT



- You can store valuable and hazardous equipment securely.
- Extra options available: scaffolding, electricity, windows, hot water. Implementation using your house style (for example: painted exterior walls)
- CSC-certified.

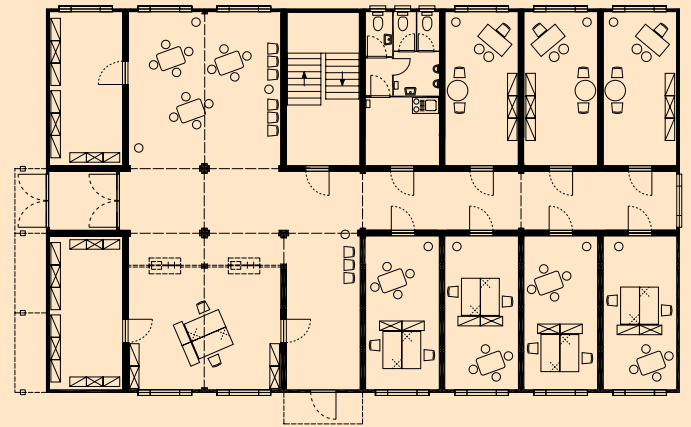


# TEMPORARY OFFICES WASHROOMS RECREATIONAL SELF-SUFFICIENCY ROOMS

## FLEXIBLE SPACE, TAILOR-MADE SOLUTIONS

All units are for rent and available from stock. All units are modular. They can be stacked on top of one other and connected. A standard unit comprises heating, lighting and flooring.

Extra accessories, such as: sunscreens, air-conditioning, invertors, data network, furniture, fire-prevention equipment and anti-burglary equipment.



## ADVANCE TYPE FLASH



## ADVANCE TYPE FLASH HIGHLY FLEXIBLE AND FUNCTIONAL

Can be connected together and stacked on top of one another to a maximum of one lower and one upper floor. The standard design ADVANCE type Flash is very flexible and offers many options by virtue of its interchangeable wall panels, including among other things a wide corridor.

Roller blinds and marmoleum floor covering are included as standard.

# LOCKER ROOMS ROOMS CANTEEN



## DE FIRE RESISTENT UNIT FLASH REI<sub>(w)</sub> 60

This unit complies with fire-performance criterion REI<sub>(w)</sub> 60.

The fire-resistance of the lower layer is most important in modular construction: the whole must not collapse. The REI<sub>(w)</sub> 60 has a unique carrying construction. The effects on its load-bearing capacity, fire density and insulation (warmth transmission) after 60 minutes, are kept to the minimum. Protection is maximum.

Fire resistance of the frame, walls en roof are tested in accordance with EN-1365-1:2012 and EN-1365-1:199.



## ENERGY PERFORMANCE LEVEL: FLASH EPB

The Flash EPB complies with the energy performance specification.





PROGRESS

## PROGRESS CONVENIENCE AND DESIGN

Progress stands for modular construction in a new era. One in which temporary rooms are not only functional, but attractive and of high quality. Suitable for semi-permanent hire and purchase.



ADVANCE TYPE IN

## ADVANCE TYPE IN SOLID AND ROBUST

Can be linked together and stacked on top of one another, up to 3 floors. The ADVANCE IN is particularly solid and robust. A standard product, very quick and easy to put in service. PVC floor covering included as standard.

## ORIGIN

ORIGIN type IN is similar to the ADVANCE IN. A workplace container as an office container, or workplace container available as single, duo or trio.



ORIGIN

## SAFETY AND AMBIENT CONDITIONS

From design, testing, production, transport, installation to dismantling.

- Algeco complies with all relevant specifications for (fire) safety, acoustic isolation and hygiene.
- Algeco is VCA and ISO 9001 certified.
- Temporary units meet the same safety regulations as permanent constructions.
- Algeco works with experienced safety coordinators which has a big impact on staff working conditions.

## SAFETY ACCESSORIES

### FIRE-PREVENTION ACCESSORIES

Smoke detector, fire alarm, fire extinguisher, fire hose, safety foil, 'emergency exit' sign, cylinder button and panic button.

### ANTI-BURGLARY ACCESSORIES

Emergency lighting, exterior lighting, movement detector, burglar-proof foil, roll-down shutters and window bars.



## ALGECO FURNITURE

A temporary office or fully-fitted bureau? Locker rooms or a canteen for your employees?

Algeco accessories make life easier:

- A pleasant working environment for your staff.
- A single contact person for the rental of your furniture and building.
- Clear overview of your budget.
- Fully equipped on delivery.

## ALGECO INSURANCE

Insurance for your modular building is compulsory. Algeco advises and assists you with “an insurance” for modular construction. An insurance with a extensive coverage against for example: graffiti, theft or explosion.

## DATA NETWORK

A standard module has an Algeco DATANET: 2 ISDN telephone connections for digital telephony, 4 network connections, Voiceover IP (VOIP), 4 plug sockets from 220/230 V and service in case of failure.

## DRYING LOCKER

To heat and dry out clothes. Modular closets for 1 to 8 people, individually adjustable with one thermostat.



## REFERENCES

Would you like to hear the experience of one of our customers? Please do not hesitate to contact us! Our customers are willing to share their experiences with you!

**HEEREMA, LYONDELL, SIEMENS, GSK, KUWAIT...**

to mention just a few.

# NEED EXTRA SPACE, FAST?

ALGECO ACCOMMODATION IS ASSEMBLED FROM MODULES, AND CAN BE INSTALLED VIRTUALLY ANYWHERE, HOWEVER YOU WANT IT. IN THIS WAY WE CAN SET UP FOR EXAMPLE, FULLY-FITTED OFFICES, MEETING ROOMS, RECREATIONAL AREAS, LOCKER ROOMS AND WASHROOMS. ALL DESIGNED AND FITTED OUT TO MEET YOUR NEEDS.

## IN NEED OF AN EXPERIENCED PARTNER?

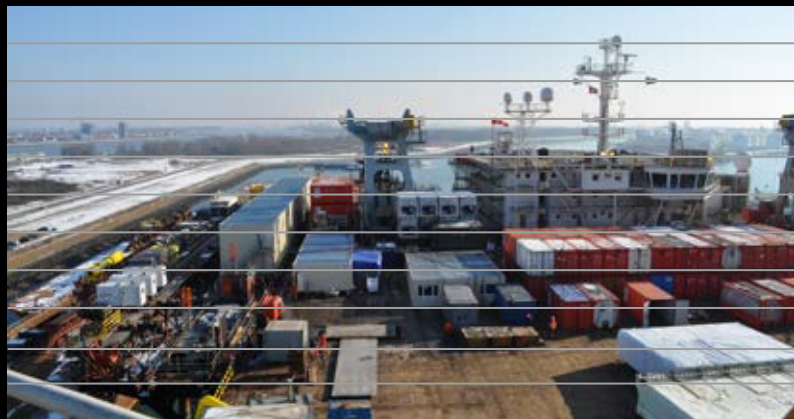
Algeco has been a market leader in modular housing solutions for over 50 years. A project in Benelux or an international project? Algeco is the solution!

## 360° SERVICE

We are your point of contact for advice and design through to key-handover solutions and beyond. If you wish, we can fit out your premises with suitable furniture, provide security and energy-saving accessories, in accordance with safety regulations.

## SAFETY FIRST

Algeco works in accordance with the strictest safety regulations. We are VCA-certified and obtained our ISO 9001 certificate in 1998.



Because you want the best working conditions for your staff!

Belgium

Telephone: 0800 90 485

Email: [info.be@as.algeco.com](mailto:info.be@as.algeco.com)

[www.algeco.be](http://www.algeco.be)



The Netherlands

Telephone: 0800 485 0 485

Email: [info.nl@as.algeco.com](mailto:info.nl@as.algeco.com)

[www.algeco.nl](http://www.algeco.nl)



**algeco**<sup>®</sup>

An ALGECO SCOTSMAN Company