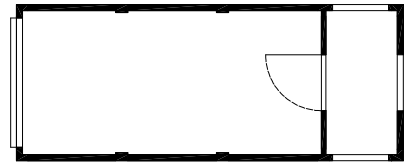


## Unit IN26

Coupleable and stackable, exchangeable walls



- Dimensions:**
- |                      |                  |            |            |
|----------------------|------------------|------------|------------|
| External dimensions: | L 6,058 mm       | W 2,438 mm | H 2,800 mm |
| Internal dimensions: | L 5,870 mm       | W 2,250 mm | H 2,500 mm |
| Weight:              | approx. 2,600 kg |            |            |
- Construction:**
- Welded steel structure made of hollow, angle and rolled steel-sections
  - 8 reinforced frame-corners
  - Accessible, ventilated roof
  - Water channel with rainwater gutters integrated on the face with 2 downpipes DN 40 / 50 per face, interior, insulated
  - 2-storied stackable, with tested type statics according to the Department for Building and Living NRW in Duesseldorf. 3 storeys possible with additional type statics
  - The manufacturing departments are authorized welding-technical operations to DIN 18 800.
- Corrosion prevention:** The entire steel structure is primed with active corrosion prevention. The frame exterior parts consist of galvanized material.
- Exterior colour:** Two-component paint RAL 1015 pale ivory
- Floor:**
- Bottom transverse girder with inlayed subfloor from 0.63 mm galvanized sectional sheet steel
  - Insulation: 100 mm rock wool to DIN 4108 (Material class A2 to DIN 4102, non-combustible)
  - 19 mm chipboard, V 100, E 1, fixed on sectional steel girders
  - Working load: 1-storied 3,500 N/m<sup>2</sup>, 2-storied 2,000 N/m<sup>2</sup>
  - 1.5 mm PVC floor covering, beige marbled, layed in sheets, bonded all over, welded seams
  - U = of 0.35 W/m<sup>2</sup> K
- External walls:**
- 0.63 mm galvanized, coil coated sectional sheet steel, 10 mm creasing depth
  - 70 mm galvanized sectional sheet metal construction
  - Insulation: 80/100 mm rock wool to DIN 4108 (Material class A2 to DIN 4102, non-combustible)
  - 10 mm chipboard, low pressure melamine faced on both sides, white
  - U = of 0.45 W/m<sup>2</sup> K (exchangeable external walls with electrical installation)
- Windscreen:**
- 10 mm chipboard, low pressure melamine faced on both sides, white,
  - 50 mm sectional sheet metal construction
  - 10 mm chipboard, low pressure melamine faced on both sides, white,
  - (removable with electrical installation)

# Unit IN26

Coupleable and stackable, exchangeable walls

|                                 |   |
|---------------------------------|---|
| <b>Roof:</b>                    | 0,75 mm galvanised sectional sheet metal, creasing depth 40 mm, structural steel girder<br><br>Insulation: 80 mm rock wool to DIN 4108<br>(Material class A2 to DIN 4102, non-combustible)<br><br>Vapour barrier<br><br>10 mm chipboard, low pressure melamine faced on both sides, white<br><br>U = of 0.44 W/m <sup>2</sup> K |
| <b>Window:</b>                  | Plastic window white, W 2,060 mm x H 1,200 mm,<br>3-piece, left and right fixed piece, centre piece with DIN turn-tip sash to the right<br><br>Insulating glazing 4/16/4, plastic shutters and, white, aluminium window sill  |
| <b>External door:</b>           | ZK door W 875 mm x H 2,000 mm, latch fittings and profiled cylinder lock  |
| <b>Inside door:</b>             | Wooden door W 875 mm x H 2,000 mm, finished treated, latch fittings and ordinary lock   |
| <b>Electrical installation:</b> | According to VDE 0100, complete with connector box, distribution board with FI switch<br>0.03 A and automatic circuit breakers, 2 neon lamps (58 W) with trough, 1 neon lamp (36 W)<br>with trough, 3 sockets, 1 socket for heating elements, 1 telephone socket, 3 switches  |
| <b>Heating:</b>                 | Electro convector 2.5 kilowatt with thermostat  |
| <b>Foundation:</b>              | Provided by the client/customer, point or continuous footing according to foundation plan   |
| <b>Installation:</b>            | Separately or combined, open space areas possible (exchangeable walls)  |

Your Algeco team will happily advise you about further equipment alternatives such as air conditioning, gas heating, additional windows and so forth. Changes to the listed standard are available on request for an additional price.

Subject to modifications.